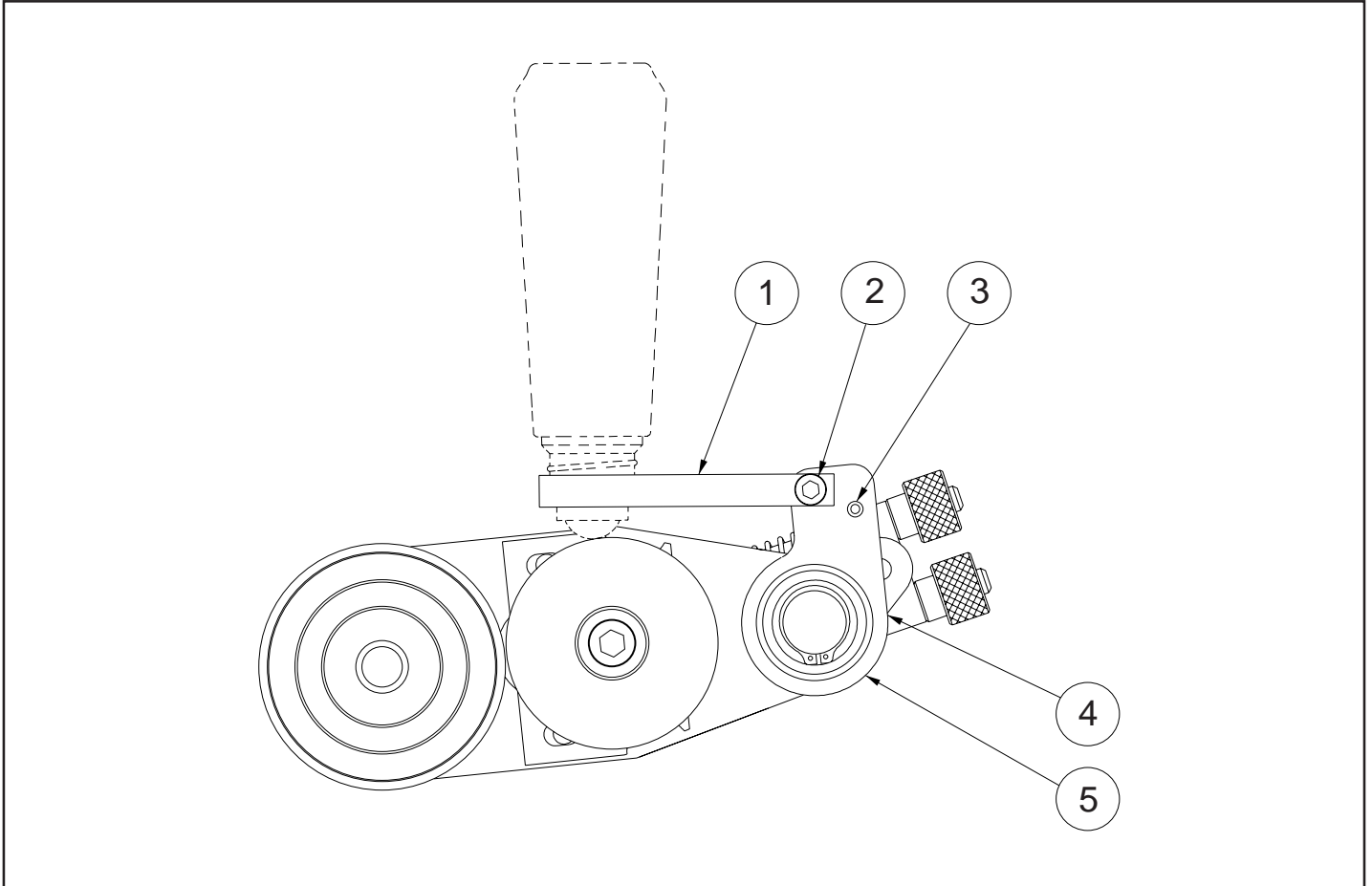


July 24, 2002

UNIVERSAL POROUS MINI-CODER  
MC-10 & MC-20 SERIES

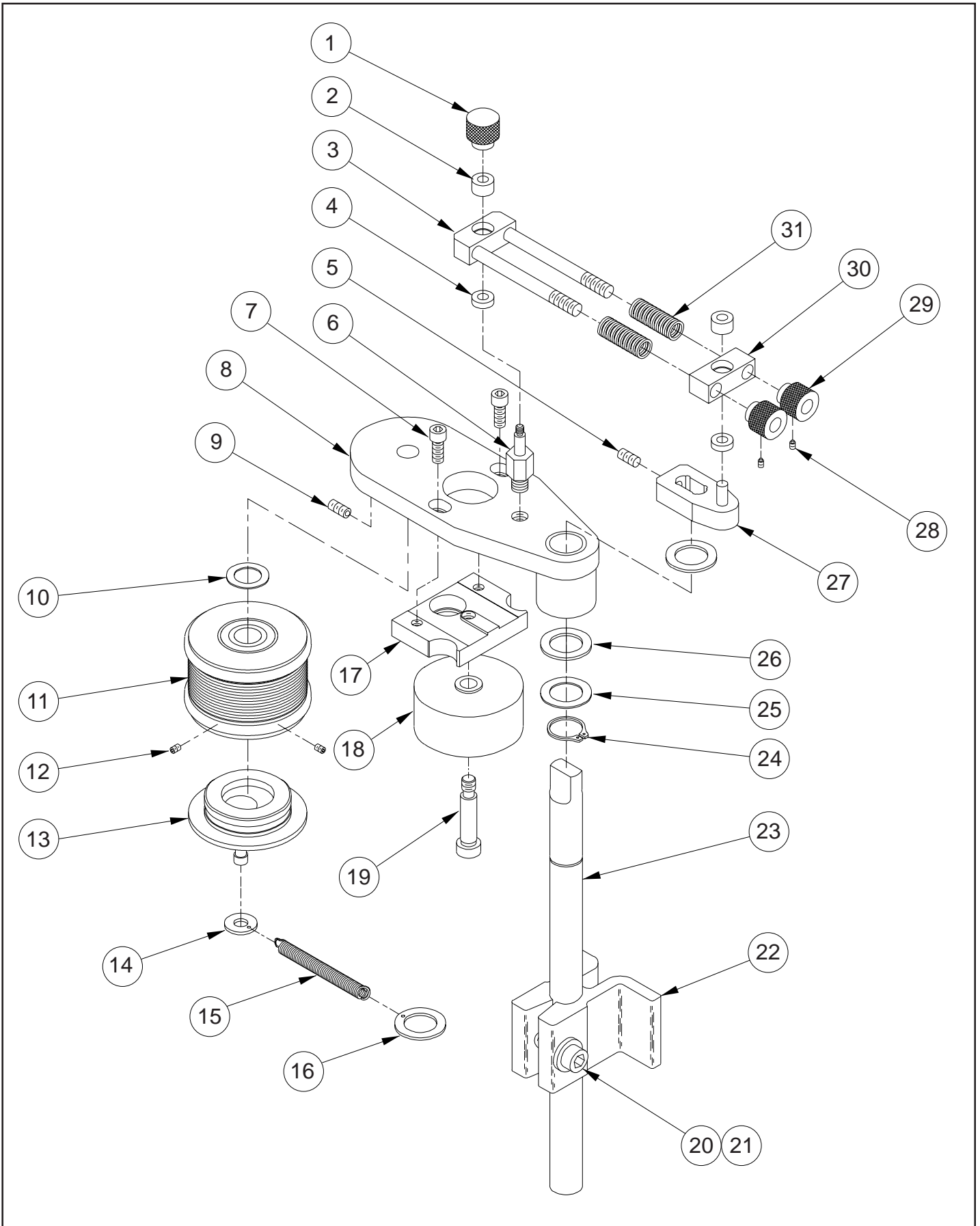
**POROUS MINI-CODER HINGED BOTTLE BRACKET ASSEMBLY  
MC-HBB - FOR TOP MOUNT INSTALLATION**



**POROUS MINI-CODER HINGED BOTTLE BRACKET ASSEMBLY PARTS LIST  
MC-HBB - FOR TOP MOUNT INSTALLATION**

| KEY NO. | PART NUMBER | QTY. REQD. | DESCRIPTION                         |
|---------|-------------|------------|-------------------------------------|
| 1       | MC-HBB02    | 1          | 1-1/8" & 2" MINI-CODER ARM          |
| 2       | MRM-CI-03   | 1          | SHOULDER SCREW, .250 DIA. X .500 LG |
| 3       | CR-16       | 1          | COMPRESSION PIN FOR HINGED BRACKET  |
| 4       | CF-05       | 1          | SET SCREW, 8-32 X 3/16" S.S. NTS    |
| 5       | MC-HBB01    | 1          | MOUNTING BRACKET                    |

# POROUS MINI-CODER ASSEMBLY



## POROUS MINI-CODER PARTS LIST

| KEY NO. | PART NUMBER   | QTY. REQD. | DESCRIPTION                                           |
|---------|---------------|------------|-------------------------------------------------------|
| 1       | MC-15         | 1          | TENSION BLOCK RETAINING KNOB                          |
| 2       | CB-05         | 2          | BEARING, NEEDLE                                       |
| 3       | MC-103        | 1          | PIVOT BLOCK ASSEMBLY "A"                              |
| 4       | MC-19         | 2          | DELRIN BUSHING                                        |
| 5       | MC-17         | 1          | SET SCREW, 1/4-20 X 1/2" LG CPS                       |
| 6       | MC-06         | 1          | HEX PIVOT POST                                        |
| 7       | MC-02         | 2          | SCREW, 1/4-20 X 5/8" LG SHC                           |
| 8       | MC-100        | 1          | BASE PLATE ASSEMBLY FOR MC-10                         |
|         | MC-200        |            | BASE PLATE ASSEMBLY FOR MC-20                         |
| 9       | MC-55         | 1          | PLUNGER, SPRING FOR QC MC                             |
| 10      | CW-04         | 1          | BRASS WASHER                                          |
| 11      | MC-10NI-PDA   | 1          | 1-1/8" NON-INDEXING MINI-CODER P.D. ASSEMBLY          |
|         | MC-10-PDA     |            | 1-1/8" INDEXING MINI-CODER P.D. ASSEMBLY              |
|         | MC-20NI-PDA   |            | 2" NON-INDEXING MINI-CODER P.D. ASSEMBLY              |
|         | MC-20-PDA     |            | 2" INDEXING MINI-CODER P.D. ASSEMBLY                  |
|         | MC-10NI-PDA-T |            | 1-1/8" NON-INDEXING MINI-CODER P.D. ASSEMBLY - METRIC |
|         | MC-10-PDA-T   |            | 1-1/8" INDEXING MINI-CODER P.D. ASSEMBLY - METRIC     |
|         | MC-20NI-PDA-T |            | 2" NON-INDEXING MINI-CODER P.D. ASSEMBLY - METRIC     |
|         | MC-20-PDA-T   |            | 2" INDEXING MINI-CODER P.D. ASSEMBLY - METRIC         |
| 12      | HP-06         | 3          | SET SCREW, 8-32 X 3/16" CPS                           |
| 13      | MC-ICA        | 1          | INDEX CAP ASSEMBLY                                    |
| 14      | MC-56         | 1          | SPRING ATTACHMENT RING - SMALL                        |
| 15      | MC-25         | 1          | SPRING, DRUM INDEX                                    |
| 16      | CW-01M        | 1          | SPRING ATTACHMENT RING - LARGE                        |
| 17      | MC-08         | 1          | RESERVOIR MOUNTING PAD                                |
| 18      | MC-10MC       | 1          | 1-1/8" MC MICROCELL REPLACEMENT ROLL                  |
|         | MC-20MC       |            | 2" MC MICROCELL REPLACEMENT ROLL                      |
| 19      | MC-41         | 1          | INK ROLL AXLE FOR 1-1/8"                              |
|         | HP-14         |            | INK ROLL AXLE FOR 2"                                  |
| 20      | CW-02         | 1          | 3/8" STEEL FLAT WASHER                                |

## **POROUS MINI-CODER PARTS LIST**

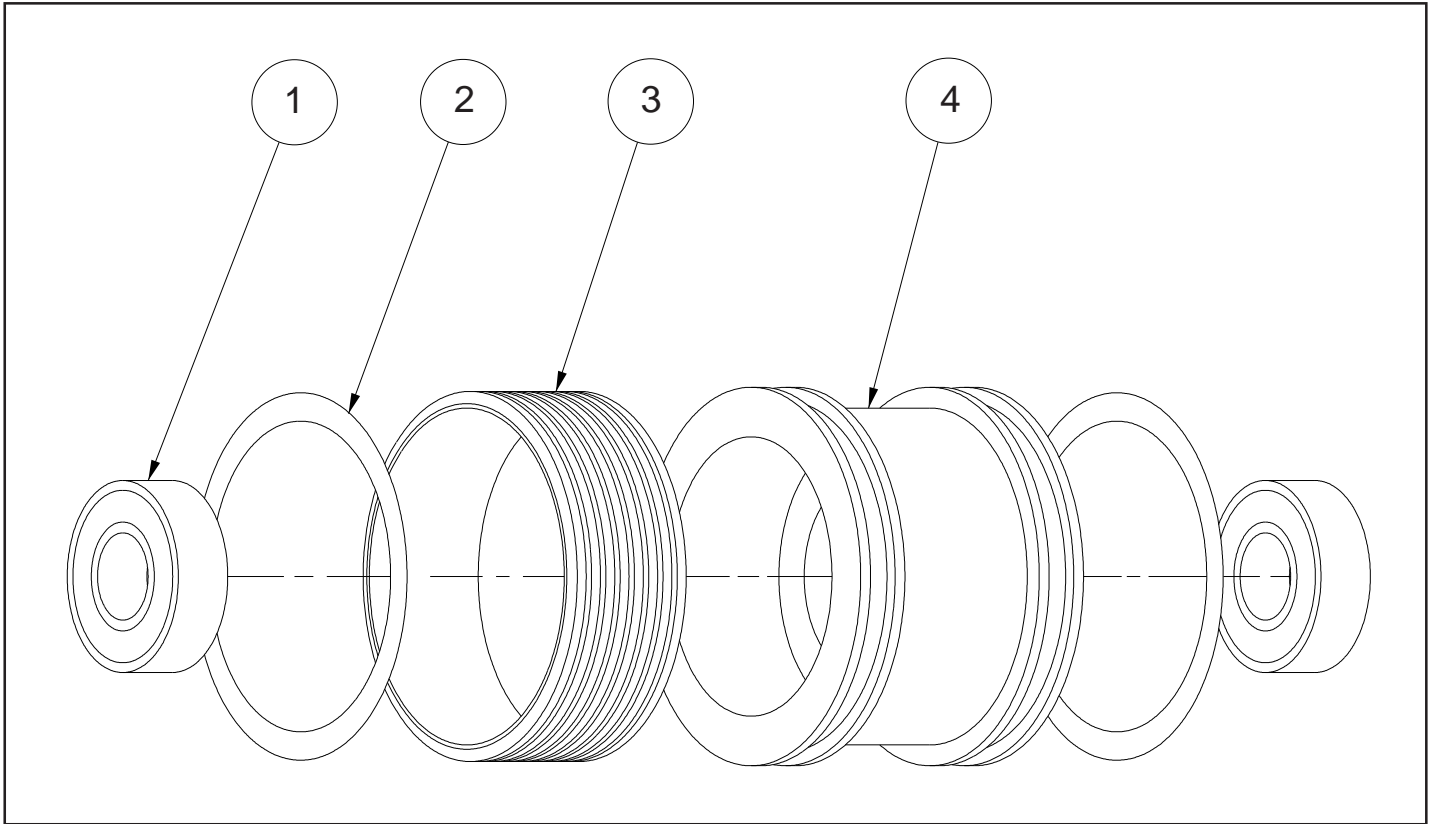
| KEY NO. | PART NUMBER | QTY. REQD. | DESCRIPTION                      |
|---------|-------------|------------|----------------------------------|
| 21      | CF-09       | 1          | SCREW, 3/8-16 X 1-1/2" SHC       |
| 22      | CM-17       | 1          | BRACKET, MOUNTING COLUMN         |
| 23      | MC-39       | 1          | MOUNTING COLUMN                  |
| 24      | CF-13       | 1          | SNAP RING FOR 3/4" SHAFT         |
| 25      | CW-01       | 1          | 3/4" STEEL FLAT WASHER           |
| 26      | CW-05       | 2          | 3/4" NYLON FLAT WASHER           |
| 27      | MC-104      | 1          | CAM BLOCK ASSEMBLY               |
| 28      | CF-05       | 2          | SET SCREW, 8-32 X 3/16" S.S. NTS |
| 29      | MC-14       | 2          | TENSION ADJUSTING KNOB           |
| 30      | CM-33       | 1          | BLOCK "C" SPRING                 |
| 31      | MC-36       | 2          | TENSION SPRING                   |

### ***IMPORTANT NOTE FOR ORDERING PRINT DRUM PARTS & ASSEMBLIES***

Universal Mini-Coders are available in both indexing and non-indexing models with either standard or metric RIBtype® rings. When ordering replacement print drums it is important to note that the print drum for indexing models are supplied with 3 threaded holes under the bottom friction bearer ring to accommodate the index cap assembly set screws.

Due to the differences in the thickness between the metric and the standard RIBtype® Die Systems, the print drums are machined to slightly different diameters to accommodate the appropriate RIBtype® rings. Be sure to check the part numbers & descriptions carefully when ordering replacement parts.

## POROUS MINI-CODER PRINT DRUM ASSEMBLY



### POROUS MINI-CODER PRINT DRUM ASSEMBLY PARTS LIST

| KEY NO. | PART NUMBER | QTY. REQD. | DESCRIPTION                                |
|---------|-------------|------------|--------------------------------------------|
| 1       | CB-04       | 2          | BEARING, PRINT DRUM                        |
| 2       | MC-01       | 2          | PRINT DRUM BEARER RING                     |
| 3       | MC-43       | 1          | RIBtype® RING 1-1/8" MC                    |
|         | MC-21       |            | RIBtype® RING 2" MC                        |
|         | MC-43T      |            | RIBtype® RING 1-1/8" MC - METRIC           |
|         | MC-21T      |            | RIBtype® RING 2" MC - METRIC               |
| 4       | MC-26       | 1          | PRINT DRUM 1-1/8" NON-INDEXING MC          |
|         | MC-26-I     |            | PRINT DRUM 1-1/8" INDEXING MC              |
|         | MC-07       |            | PRINT DRUM 2" NON-INDEXING MC              |
|         | MC-07-I     |            | PRINT DRUM 2" INDEXING MC                  |
|         | MC-26-T     |            | PRINT DRUM 1-1/8" NON-INDEXING MC - METRIC |
|         | MC-26-I-T   |            | PRINT DRUM 1-1/8" INDEXING MC - METRIC     |
|         | MC-07-T     |            | PRINT DRUM 2" NON-INDEXING MC - METRIC     |
|         | MC-07-I-T   |            | PRINT DRUM 2" INDEXING MC - METRIC         |

**Universal Stenciling & Marking Systems, Inc.**

P.O. Box 871 - St. Petersburg, FL 33731 - U.S.A.

Ph: (727) 894-3027 Fax: (727) 821-7944

E-Mail: sales@universal-marking.com Website: www.universal-marking.com