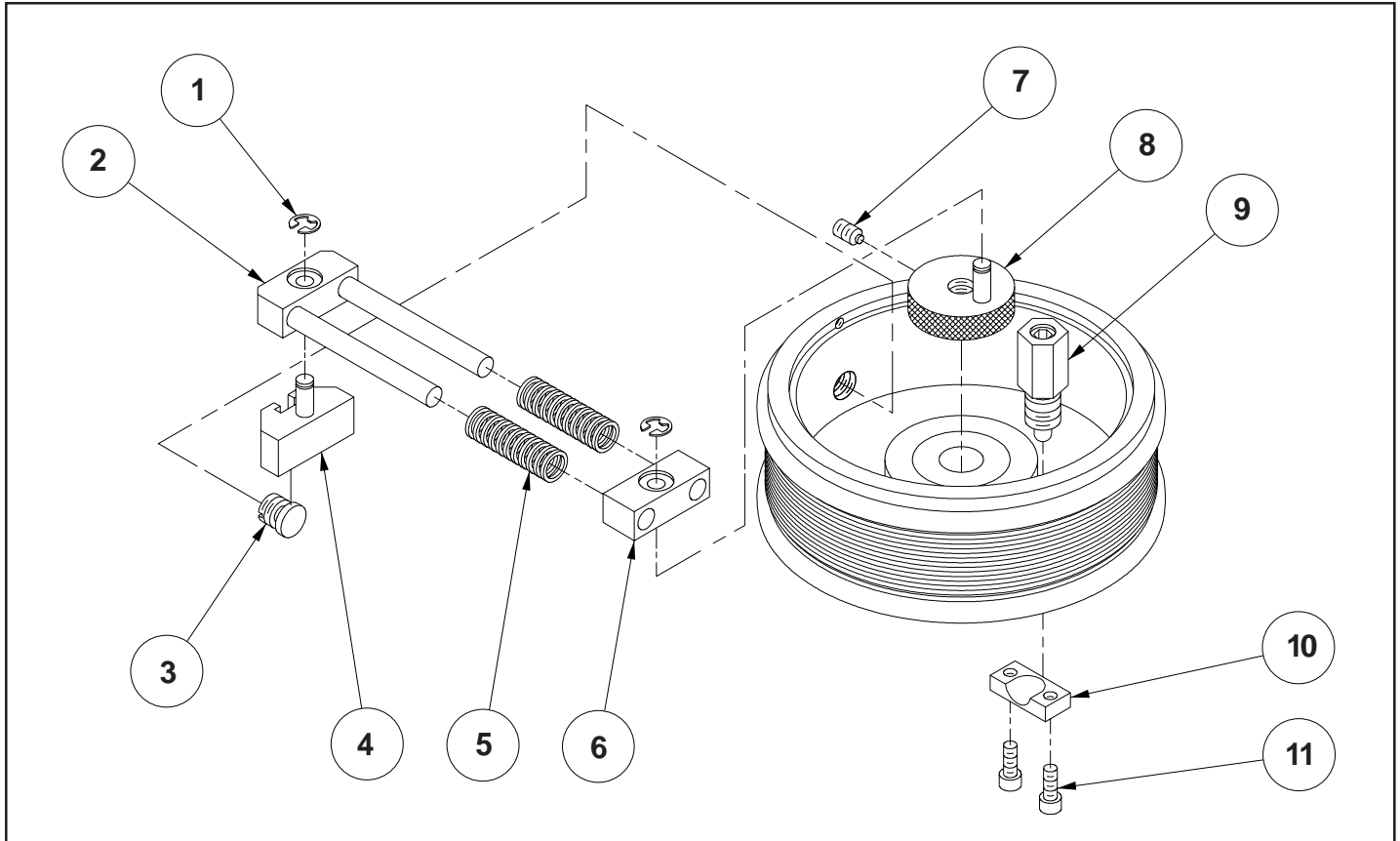


May 24, 2010

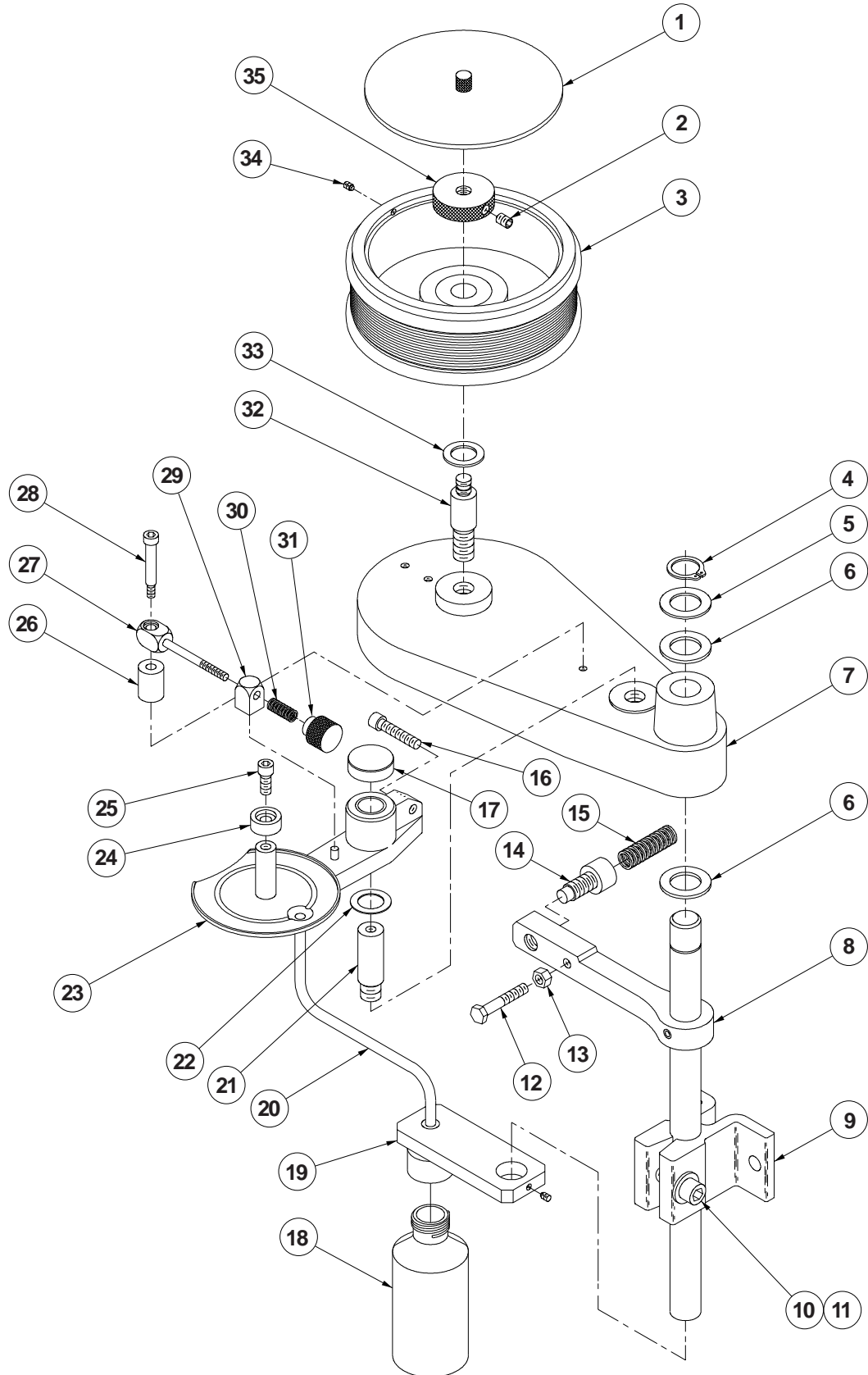
**POROUS CONVEYOR LINE PRINTER INDEXING ASSEMBLY**



**POROUS CONVEYOR LINE PRINTER INDEXING ASSEMBLY PARTS LIST**

KEY NO.	PART NUMBER	QTY. REQD.	DESCRIPTION
1	CF-28	2	SNAP RING
2	CLP-IA	1	INDEX ASSEMBLY BLOCK "A"
3	CF-27	1	INDEX ASSEMBLY MOUNTING SCREW
4	CLP-IB	1	INDEX ASSEMBLY BLOCK "B"
5	CS-07	2	DRUM INDEX SPRING
6	CLP-IC	1	INDEX ASSEMBLY BLOCK "C"
7	CF-04	1	1/4-20 BRASS TIP SET SCREW
8	CLP-IR2	1	INDEX RING ASSEMBLY
9	CLP-IP	1	INDEX PLUNGER ASSEMBLY
10	CM-34	1	INDEX RAMP
11	CF-29	2	SCREW, 10-32 X 1/2" SHC

# POROUS CONVEYOR LINE PRINTER ASSEMBLY



## **POROUS CONVEYOR LINE PRINTER PARTS LIST**

KEY NO.	PART NUMBER	QTY. REQD.	DESCRIPTION
1	CM-13	1	DUST COVER W/KNURLED KNOB
2	CF-04	1	SET SCREW, 1/4-20 X 3/8 BTS
3	CLP-100NI-PDA	1	CLP-100 NON-INDEXING PRINT DRUM ASSEMBLY
	CLP-100-PDA		CLP-100 INDEXING PRINT DRUM ASSEMBLY
	CLP-200NI-PDA		CLP-200 NON-INDEXING PRINT DRUM ASSEMBLY
	CLP-200-PDA		CLP-200 INDEXING PRINT DRUM ASSEMBLY
	CLP-300NI-PDA		CLP-300 NON-INDEXING PRINT DRUM ASSEMBLY
	CLP-300-PDA		CLP-300 INDEXING PRINT DRUMASSEMBLY
	CLP-400NI-PDA		CLP-400 NON-INDEXING PRINT DRUM ASSEMBLY
	CLP-400-PDA		CLP-400 INDEXING PRINT DRUM ASSEMBLY
	CLP-100NI-PDA-T		CLP-100 NON-INDEXING PRINT DRUM ASSEMBLY - METRIC
	CLP-100-PDA-T		CLP-100 INDEXING PRINT DRUM ASSEMBLY - METRIC
	CLP-200NI-PDA-T		CLP-200 NON-INDEXING PRINT DRUM ASSEMBLY - METRIC
	CLP-200-PDA-T		CLP-200 INDEXING PRINT DRUM ASSEMBLY - METRIC
	CLP-300NI-PDA-T		CLP-300 NON-INDEXING PRINT DRUM ASSEMBLY - METRIC
	CLP-300-PDA-T		CLP-300 INDEXING PRINT DRUM ASSEMBLY - METRIC
	CLP-400NI-PDA-T		CLP-400 NON-INDEXING PRINT DRUM ASSEMBLY - METRIC
	CLP-400-PDA-T		CLP-400 INDEXING PRINT DRUM ASSEMBLY - METRIC
4	CF-13	1	SNAP RING FOR 3/4" SHAFT
5	CW-01	1	3/4" STEEL FLAT WASHER
6	CW-05	2	3/4" NYLON FLAT WASHER
7	CC-01	1	BASE PLATE ASSEMBLY
8	CLP-MCA	1	MOUNTING COLUMN ASSEMBLY
9	CM-17	1	MOUNTING COLUMN BRACKET
10	CW-02	1	3/8" STEEL FLAT WASHER
11	CF-09	1	SCREW, 3/8-16 X 1-1/2" SHC
12	CF-10	1	HEX BOLT, 1/4-20 X 1-1/2
13	CF-11	1	HEX NUT, 1/4-20
14	CM-25	1	TENSION ARM SPRING ADJUSTING CUP ASSEMBLY
15	CS-06	1	TENSION ARM COMPRESSION SPRING
16	CF-02	1	SCREW, 1/4-20 X 1-1/4" SHC
17	CM-16	1	PIVOT ARM CAP
18	CM-12	1	4 OZ. RECOVERY BOTTLE
19	CLP-RB	1	RECOVERY BOTTLE BRACKET ASSEMBLY
20	CT-01	1	DRAIN TUBE
21	CA-03	1	PIVOT ARM AXLE

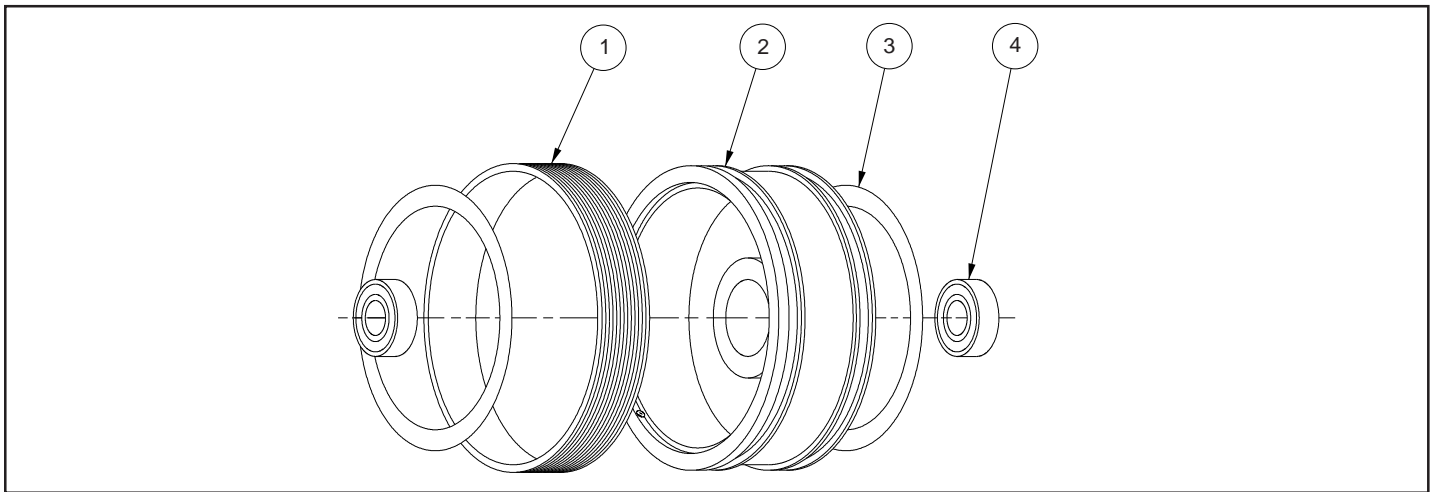
## **POROUS CONVEYOR LINE PRINTER PARTS LIST**

KEY NO.	PART NUMBER	QTY. REQD.	DESCRIPTION
22	CW-04	1	BRASS WASHER
23	CLP-PA1	1	CLP-100 PIVOT ARM ASSEMBLY
	CLP-PA2		CLP-200 PIVOT ARM ASSEMBLY
	CLP-PA3		CLP-300 PIVOT ARM ASSEMBLY
	CLP-PA4		CLP-400 PIVOT ARM ASSEMBLY
24	CM-01	1	INK ROLL AXLE CAP
25	MC-02	1	SCREW, 1/4-20 X 5/8" SHC
26	CM-26	1	PIVOT ARM SPRING ASSEMBLY POST
27	CLP-PAB	1	PIVOT ARM BLOCK "B" ASSEMBLY
28	CF-26	1	PIVOT ARM SHOULDER SCREW
29	CM-27	1	PIVOT ARM BLOCK "A"
30	CS-05	1	PIVOT ARM COMPRESSION SPRING
31	CM-30	1	PIVOT ARM ADJUSTING KNOB
32	CA-06	1	CLP-100 PRINT DRUM AXLE
	CA-02	1	CLP-200 PRINT DRUM AXLE
	CA-01	1	CLP-300 & 400 PRINT DRUM AXLE
33	CW-03	1	PRINT DRUM BRASS WASHER
34	CF-05	2	SET SCREW, 8-32 X 3/16" S.S. NTS
35	CM-04	1	KNURLED RETAINING RING

## **POROUS CONVEYOR LINE PRINTER DRY INK ROLLS**

<b>CLP DRY INK ROLLS FOR 100, 200, 300 &amp; 400 SERIES CODERS</b>		
CLP-SERIES	PART NUMBER	DESCRIPTION
CLP-100 SERIES	CLP-MC1	1-1/8" MICROCELL INK ROLL - DRY - STANDARD
	CLP-XC1	1-1/8" XF NEOPRENE INK ROLL - DRY - OPTIONAL
	CLP-FC1	1-1/8" NEOPRENE INK ROLL - DRY - OPTIONAL
CLP-200 SERIES	CLP-MC2	2" MICROCELL INK ROLL - DRY - STANDARD
	CLP-XC2	2" XF NEOPRENE INK ROLL - DRY - OPTIONAL
	CLP-FC2	2" NEOPRENE INK ROLL - DRY - OPTIONAL
CLP-300 SERIES	CLP-XC3	3" XF NEOPRENE INK ROLL - DRY - STANDARD
	CLP-MC3	3" MICROCELL INK ROLL - DRY - OPTIONAL
	CLP-FC3	3" NEOPRENE INK ROLL - DRY - OPTIONAL
CLP-400 SERIES	CLP-XC4	4" XF NEOPRENE INK ROLL - DRY - STANDARD
	CLP-MC4	4" MICROCELL INK ROLL - DRY - OPTIONAL
	CLP-FC4	4" NEOPRENE INK ROLL - DRY - OPTIONAL

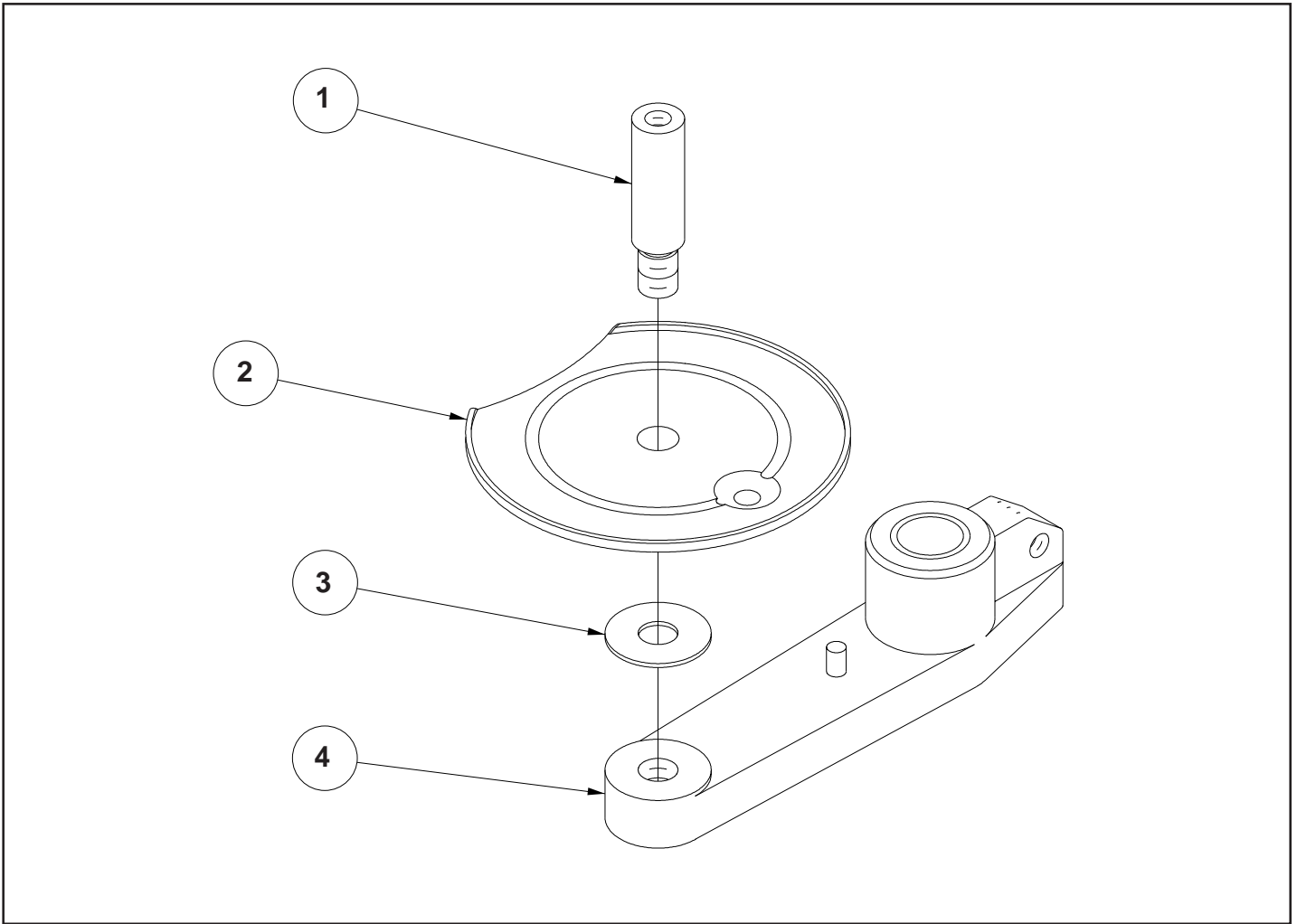
## POROUS CONVEYOR LINE PRINTER PRINT DRUM ASSEMBLY



### POROUS CONVEYOR LINE PRINTER PRINT DRUM ASSEMBLY PARTS LIST

KEY NO.	PART NUMBER	QTY. REQD.	DESCRIPTION
1	CLP-BL1	1	CLP-100-RIBtype® DRUM COVER
	CLP-BL2		CLP-200-RIBtype® DRUM COVER
	CLP-BL3		CLP-300-RIBtype® DRUM COVER
	CLP-BL4		CLP-400-RIBtype® DRUM COVER
	CLP-BL1T		CLP-100-RIBtype® DRUM COVER - METRIC
	CLP-BL2T		CLP-200-RIBtype® DRUM COVER - METRIC
	CLP-BL3T		CLP-300-RIBtype® DRUM COVER - METRIC
	CLP-BL4T		CLP-400-RIBtype® DRUM COVER - METRIC
2	CLP-PD1	1	CLP-100 NON-INDEXING PRINT DRUM W/CB-04 PRINT DRUM BEARINGS
	CLP-PD1I		CLP-100 INDEXING PRINT DRUM W/CB-04 PRINT DRUM BEARINGS
	CLP-PD2		CLP-200 NON-INDEXING PRINT DRUM W/CB-04 PRINT DRUM BEARINGS
	CLP-PD2I		CLP-200 INDEXING PRINT DRUM W/CB-04 PRINT DRUM BEARINGS
	CLP-PD3		CLP-300 NON-INDEXING PRINT DRUM W/CB-04 PRINT DRUM BEARINGS
	CLP-PD3I		CLP-300 INDEXING PRINT DRUM W/CB-04 PRINT DRUM BEARINGS
	CLP-PD4		CLP-400 NON-INDEXING PRINT DRUM W/CB-04 PRINT DRUM BEARINGS
	CLP-PD4I		CLP-400 INDEXING PRINT DRUM W/CB-04 PRINT DRUM BEARINGS
	CLP-PD1T		CLP-100 NON-INDEXING PRINT DRUM W/CB-04 PRINT DRUM BEARINGS - METRIC
	CLP-PD1IT		CLP-100 INDEXING PRINT DRUM W/CB-04 PRINT DRUM BEARINGS - METRIC
	CLP-PD2T		CLP-200 NON-INDEXING PRINT DRUM W/CB-04 PRINT DRUM BEARINGS - METRIC
	CLP-PD2IT		CLP-200 INDEXING PRINT DRUM W/CB-04 PRINT DRUM BEARINGS - METRIC
	CLP-PD3T		CLP-300 NON-INDEXING PRINT DRUM W/CB-04 PRINT DRUM BEARINGS - METRIC
	CLP-PD3IT		CLP-300 INDEXING PRINT DRUM W/CB-04 PRINT DRUM BEARINGS - METRIC
	CLP-PD4T		CLP-400 NON-INDEXING PRINT DRUM W/CB-04 PRINT DRUM BEARINGS - METRIC
	CLP-PD4IT		CLP-400 INDEXING PRINT DRUM W/CB-04 PRINT DRUM BEARINGS - METRIC
3	CO-02	2	BEARER RING
4	CB-04	2	PRINT DRUM BEARING

## POROUS CONVEYOR LINE PRINTER PIVOT ARM ASSEMBLY



### POROUS CONVEYOR LINE PRINTER PIVOT ARM ASSEMBLY PARTS LIST

KEY NO.	PARTNUMBER	QTY. REQD.	DESCRIPTION
1	CA-07	1	CLP-100 INK ROLL AXLE
	CA-05		CLP-200 INK ROLL AXLE
	CA-08		CLP-300 INK ROLL AXLE
	CA-04		CLP-400 INK ROLL AXLE
2	CLP-RT	1	RECOVERY TRAY ASSEMBLY
3	CW-06	1	RECOVERY TRAY DELRIN WASHER
4	CLP-PA	1	PIVOT ARM SUB-ASSEMBLY

**Universal Stenciling & Marking Systems, Inc.**

P.O. Box 871 - St. Petersburg, FL 33731 - U.S.A.

Ph: (727) 894-3027 Fax: (727) 821-7944

E-Mail: sales@universal-marking.com Website: www.universal-marking.com